

Adverse child experiences, or ACEs, negatively affect children

Keep Kids Safe

LEARN ABOUT

ACES

ADVERSE CHILDHOOD
EXPERIENCES

LACK OF
TRUSTED
ADULTS

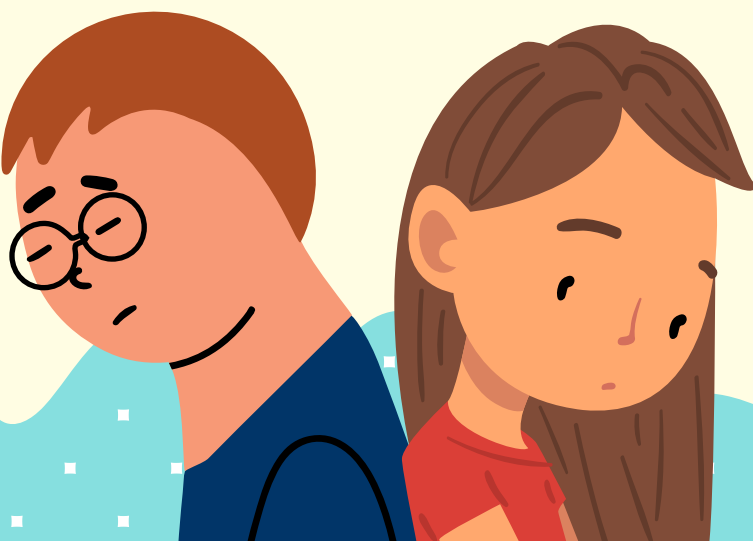
DOMESTIC
VIOLENCE

SUBSTANCE
ABUSE
IN HOME

UNTREATED
PARENTAL
MENTAL
ILLNESS

ABUSE
OR
NEGLECT

ABSENT
PARENT



Here's how you can help!

Keep Kids Safe

RESPOND TO
ACES

ADVERSE CHILDHOOD
EXPERIENCES

SERVE AS
A
TRUSTED
ADULT

SUPPORT
STRUGGLING
FAMILIES

ADVOCATE
FOR
EARLY
INTERVENTION
PROGRAMS

REFER
FOR
TREATMENT

REPORT
SUSPICIONS
OF ABUSE/
NEGLECT

VOLUNTEER
AT A
FAMILY
RESOURCE
CENTER



Diocese of Manchester
catholicnh.org/safety

